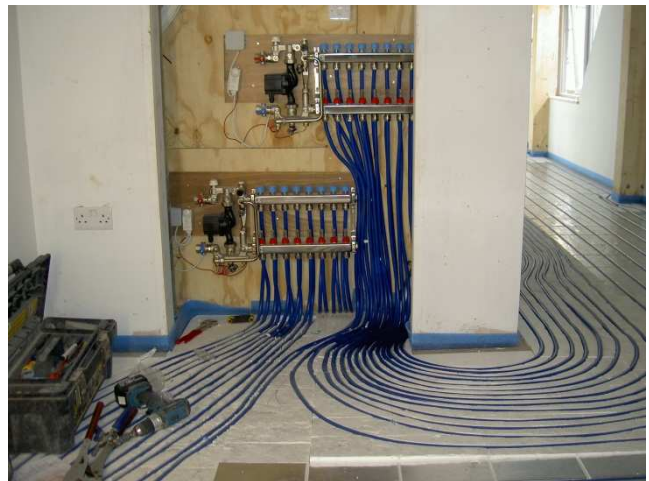


Shoreham Nursery, Kent, 2011. Architects: Hampson Williams Contractor: Qube Developments



Shot showing the JUPITER IDEAL EP0 installed between 30mm softwood battens.



Space restrictions required that two manifolds be located in the same cupboard.



Shot showing flow and return pipework lying next to normal heating panels in long corridor.



20mm Fermacell 2E11 installed as load bearing surface in carpeted bedrooms.