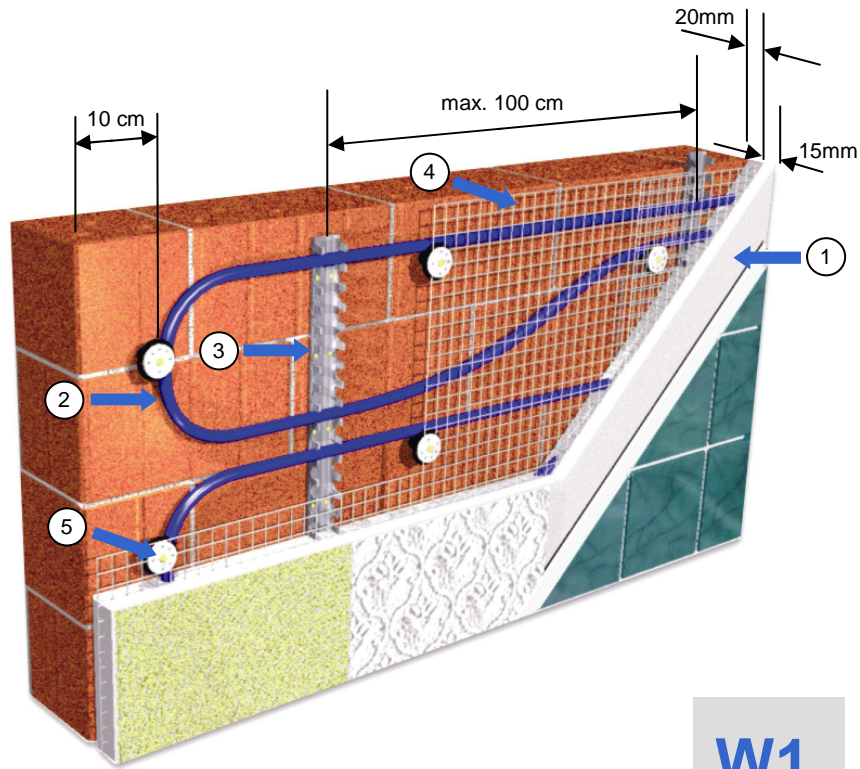


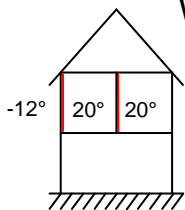
Wet plaster



- 35mm plaster (1)
- JUPITER 16mm pipe (2)
- JUPITER pipe clip tracks (3)
- JUPITER metal grid (4)
- JUPITER wall heating fixings (5)

Construction data			Remarks
Construction thickness	mm	36	Thickness excluding wall
Thermal resistance R	m ² K/W	0	No insulation within construction
Plaster thickness	mm	35	
JUPITER system pipe	mm	16 x 2,0	
JUPITER clip rails	mm	2000 x 20	
JUPITER galv. wall mesh	mesh : gauge :	19x19 1,05	Mesh 28mm from wall embedded in last plaster layer
JUPITER wall fixings – 3 part	mm	75	
Plaster type		(1) (2) (3)	
Wall finishes		any	Wall paper, paint, tiles
Pipe spacing	EZ2: EZ3: CZ1:	mm 120 150 200	
Additional information		Substrate must be solid, level and flat. See floor tolerance table DIN 18202, table 3, part 4 All manufacturer installation procedures should be observed.	

Construction W1



Area of application

(1)

Plaster
e.g. Knauf MP75 G/F, MP75 G
Thermal conductivity 0,58 W/mK
Multi coat application
Max. flow temp. 50°
Operation – 3 days after heat up protocol

(2)

Clay plaster
e.g. Claytec
Thermal conductivity 0,65 W/mK
Multi coat application
Max. flow temp. 50°
Operation - immediate

(3)

Cement plaster
e.g. Marmorit Rotkalk
Thermal conductivity 0,87 W/mK
Two coat application
Max. flow temp. 65-70°
Operation – 8 days after heat up protocol

JUPITER

